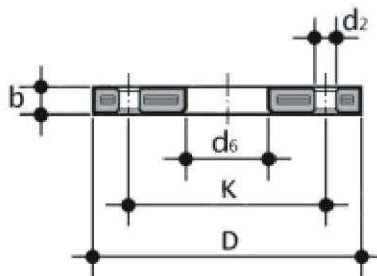
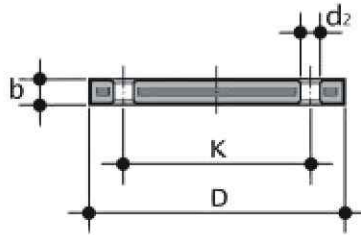


Slip On Backing Ring & Blind Flange



Size	Without Steel Inserts					
	ASA 150lbs, ANSI 16.5					
d	d <sub>6</sub>	K	D	b	d <sub>2</sub>	Bolts
20	25	60	90	20	16	4xM14
25	30	70	100	20	16	4xM14
32	40	80	108	20	16	4xM14
40	50	89	118	20	16	4xM14
50	60	99	127	20	16	4xM14
63	73	121	153	20	19	4xM16
75	85	140	178	20	19	4xM16
90	100	152	191	20	19	4xM16
110	120	191	229	22	23	8xM21
125	135	216	254	22	23	8xM21
140	150	216	254	22	23	8xM21
160	170	241	310	24	23	8xM21
180	190	241	310	24	23	8xM21
200	210	299	343	26	23	8xM21
225	235	299	343	26	23	8xM21
250	265	362	406	30	26	12xM24
280	295	362	406	30	26	12xM24
315	330	432	483	30	26	12xM24
355	370	476	534	30	26	12xM24
400	415	540	597	35	29	12xM26
450	465	578	635	35	29	16xM26
500	515	635	700	35	32	16xM30
560	575	692	749	35	35	20xM32
630	645	749	814	35	35	20xM32

Without Steel Inserts					
BS 10 Table D					
d <sub>6</sub>	K	D	b	d <sub>2</sub>	Bolts
25	67	95	20	14	4x1/2"
30	73	102	20	14	4x1/2"
40	83	115	20	14	4x1/2"
50	87	120	20	14	4x1/2"
60	98	134	20	14	4x1/2"
73	115	152	20	14	4x1/2"
85	127	165	20	18	4x1/2"
100	146	184	20	18	8x5/8"
120	178	216	20	18	8x5/8"
135	210	254	20	18	8x5/8"
150	210	254	20	18	8x5/8"
170	235	380	20	18	8x5/8"
190	260	305	20	18	8x5/8"
210	261	305	25	18	8x5/8"
235	292	337	25	18	8x5/8"
265	356	406	30	18	8x5/8"
295	356	406	30	21	12x3/4"
330	406	457	30	21	12x3/4"
370	470	527	30	21	12x3/4"
415	584	676	35	24	12x7/8"
465	584	641	35	24	12x7/8"
515	641	705	35	24	16x7/8"
575	699	762	35	28	16x1"
645	756	825	35	28	16x1"

With Steel Inserts					
DIN 2501					
d <sub>6</sub>	K	D	b	d <sub>2</sub>	Bolts
28	65	95	12	14	4xM12
34	75	108	14	14	4xM12
42	85	115	14	14	4xM12
51	100	140	16	18	4xM16
62	110	150	16	18	4xM16
78	125	165	19	18	4xM16
92	145	185	19	18	4xM16
108	160	200	21	18	8xM16
128	180	220	22	18	8xM16
135	180	220	22	18	8xM16
158	210	250	26	18	8xM16
178	240	285	27	22	8xM20
188	240	285	27	22	8xM20
235	295	340	28	22	8xM20
238	295	340	28	22	8xM20
288	350	406	31	22	12xM20
294	350	406	31	22	12xM20
338	400	460	34	22	12xM20
376	460	512	39	22	16xM20
430	515	580	43	26	16xM24
517	620	678	45	26	20xM24
533	620	678	45	26	20xM24
618	725	790	50	30	20xM27
645	725	790	50	30	20xM27

\* dimensions in mm

Table E and Table F also available  
Gaskets available

