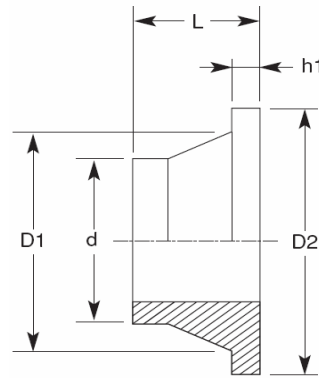


Stub Ends – Adaptors

Moulded

Type : Butt Weld



Dimensions in mm

Code	d	D ₁	D ₂	h ₁	L	SDR11 (e)	SDR17 (e)
PESE020	20	27	45	7	52	1.9	1.9
PESE025	25	33	58	9	53	2.3	2.3
PESE032	32	40	68	10	52	2.9	2.9
PESE040	40	50	78	11	51	3.7	3.7
PESE050	50	61	88	12	53	4.6	4.6
PESE063	63	75	95	15	50	5.8	3.6
PESE075	75	88	108	17	50	6.9	4.3
PESE090	90	103	129	18	80	8.2	5.1
PESE110	110	124	158	19	80	10.0	6.3
PESE125	125	128	158	25	80	11.4	7.1
PESE140	140	151	187	25	80	12.8	8.0
PESE160	160	168	213	26	80	14.6	9.1
PESE180	180	190	213	30	80	16.4	10.2
PESE200	200	225	270	32	95	18.2	11.4
PESE225	225	230	270	32	95	20.5	12.8
PESE250	250	284	322	35	100	22.8	14.2
PESE280	280	294	334	35	100	25.5	15.9
PESE315	315	335	380	35	100	28.7	17.9
PESE355	355	366	442	40	110	32.3	20.1
PESE400	400	420	495	45	110	36.4	22.7
PESE450	450	470	545	45	110	41.0	25.5
PESE500	500	520	596	60	125	45.5	28.4
PESE560	560	580	657	60	125	51.0	31.7
PESE630	630	650	710	60	130	57.3	35.7
PESE710	710	735	800	60	130	64.7	40.3

SDR Rating / Pipe Specs Standard to be specified